



Divya Enterprises

Company Profile



M/s. Divya Enterprises is rapidly growing firm operating in the field of Design & Manufacturing of electromechanical products and their erection & commissioning at site; we are adept system developers and solution provider in water industry & pumping machinery.

Major areas of operation

- ◆ Water Supply, Water treatment plants, Surge Solutions
- ◆ Lift irrigation Schemes, Large Size Pumping System
- ◆ Fire Fighting, Oil & Gas



Manufacturing

Fabrication

Projects

Innovation is key !!!

”Nothing changes if nothing changes.” well if nothing changes, we stay the same. We don’t grow. We don’t evolve. We don’t get better. And that’s not going to work—not for us, and not for the world. We *need* positive change. We need new ideas. We need progress.

Innovation management is all about continuous improvement both as a company and on a personal level.



Vision

In the near future, water will be the topic that moves the world. Alternatives can be found for fuel, but not for water. In the world's hotter regions, drinking water is already more valuable than petrol. In world, water is increasingly used to generate energy. Water is and will remain one of our most important resources. Only the most innovative of companies will play a role on the global water and wastewater markets. The arid countries will continue to dry out, while the wetter countries will flood more frequently. Modern and sensible water management—one of our main goals—is the only way to keep the balance.



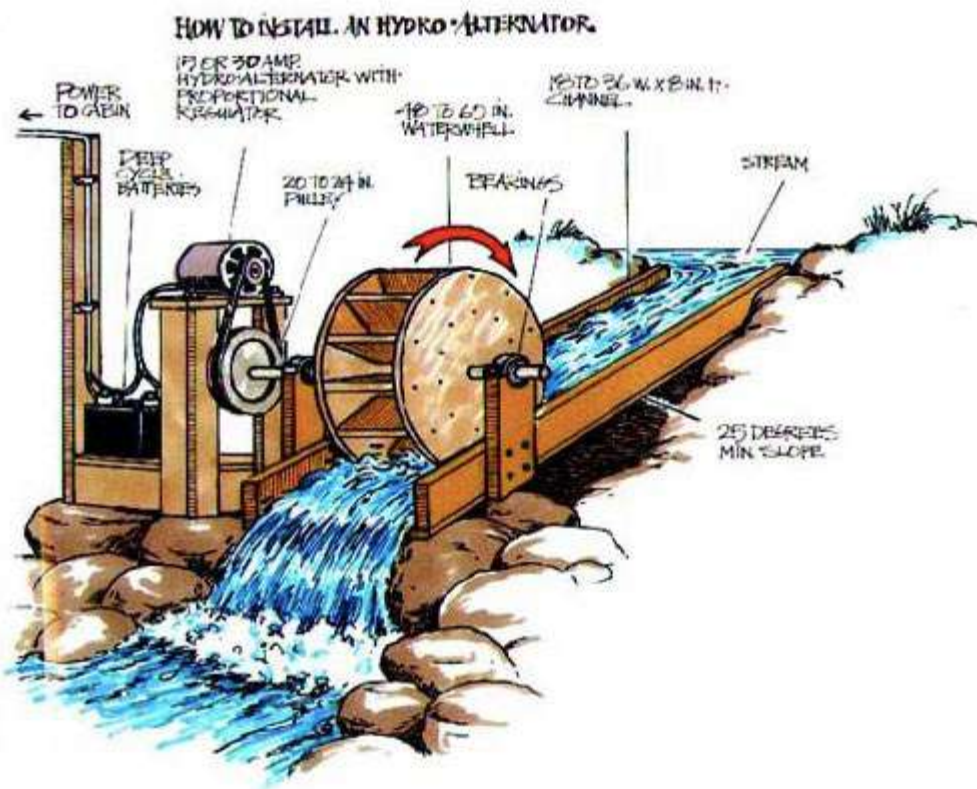
Today is in your hands, tomorrow in ours. And yesterday shows what we are capable of!

Mission

Give best solutions, Give realistic commitments and strive to become best by fusing hard work along with Intelligence. Achieve 100% Customer satisfaction by giving best product and service on time and every time

Safety

Safety is by far the most important item on our sustainability agenda. Every hour of every day, we operate under conditions that are potentially dangerous if not managed correctly. We believe that safety is a leadership issue as well as a personal responsibility of all our employees.



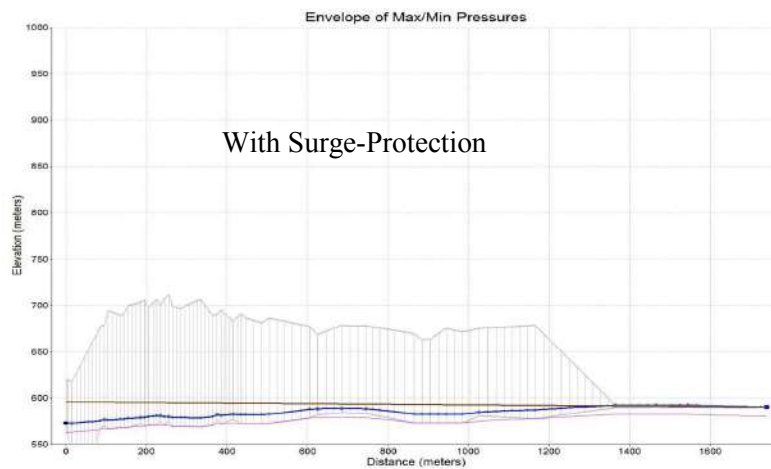
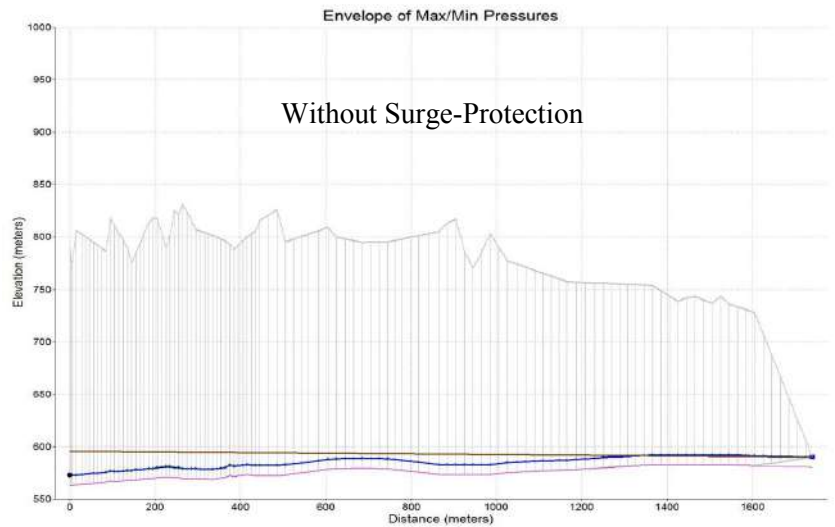
Trust

Nothing is more important to us than having the trust of our customers. In our business, deals are often made with a handshake and a nod, and we wouldn't want it any other way. We want our customers to sleep easy, safe in the knowledge that their operation is in the best possible hands.

Water-Hammer Solutions

◆ Surge Analysis

Water-Hammer Analysis is systematic Study of Rising Mains and Pumping Data. The Objective is to identify Potential Surges throughout pipe line, due to sudden tripping of pumps and suggesting suitable protection equipment's to protect Pipeline. This scope includes positive as well as negative surges in various possible working and tripping conditions. The detailed Report along with comparative



Graphical data is provided to client, which shows system behaviour before and after use of protection Equipment's. This Surge analysis is done on widely used and reputed Software tool known as KY pipe / Pipe 2000. The results from this software are verified with conventional and well established methods that are used by Organisations like IISC Bangalore, IIT-Bombay, VNIT Nagpur Etc.

◆ Bladder Vessel, Compressor Type Surge Protection System

Divya Enterprises is on path to become leading manufacturer & supplier of Bladder Vessels in India.

Divya Enterprises is First Company in India to convert Conventional Compressor type Surge protection system into Bladder type Surge Protection System.

Divya Enterprises is First Company in India to Install Bladder Vessel on the Sewerage line for Surge protection.



- ◆ Air Cushion Valves, 3 Stage Air Valves

We Supply tamperproof DI Body Air cushion Valves, 3 stage air valves

- ◆ Zero velocity valves, Surge suppression valves



Zero Velocity Valves are used to arrest negative surges in pipeline whereas Surge Suppression Valves are used to arrest positive surge in pipeline. Often these type of valves are economic solution to prevent pumping system from water-hammer. System design needs to be carried out with great care while recommending these valves at various location.



- ◆ Conversion of Compressor Type System into Bladder type surge protection system

There are many advantages of Bladder type system over conventional compressor type system, as listed below. If Conventional system is already installed and user wants to go for up-gradation of system, then retrofitting of Bladders into existing system is most economic way of doing it.



Advantages of Bladder type system over conventional System

- “0” Rs. Maintenance
- “0” Rs. Running Cost
- “0” Power Requirement
- “0” Chance of human error
- “0” Instrument piping; Self Controlled



Screening / Sealing Equipment's, Caisson Pipes, Strainers, Dismantling Joints

◆ Stop Log Gate

Stop log gate is easiest and cheapest device to control the flow through canals, LIS's, Forebay inlets etc. Along with conventional designs of Stop log gate, We are consistently Innovating, developing and testing different technologies on stop log gate to achieve better sealing life, reduced leakage rate. We have In house Design, Manufacturing facility for Stop log gates along with



Test wells upto size of 3 mtr of width. Along with all Material & fabrication related tests we offer in-house leak test for these gates which helps us to improve and proceed towards superiority in product quality.

Test wells upto size of 3 mtr of width. Along with all Material & fabrication related tests we offer in-house leak test for these gates which helps us to improve and proceed towards superiority in product quality.

◆ Bar Screen fine/course type, Trash Rack Screens, Flow Straighteners



Screens, Flow straightener are standard products that are required in Lift irrigation schemes, Canals etc. We design the products as per customer continece and complying with Relevant National, International Standard. Our well equipped and well qualified manufacturing capacity can give output ranging from 5 to 25 ton of finished goods. The materials can be MS, SS, GI, Duplex steel, FRP etc.



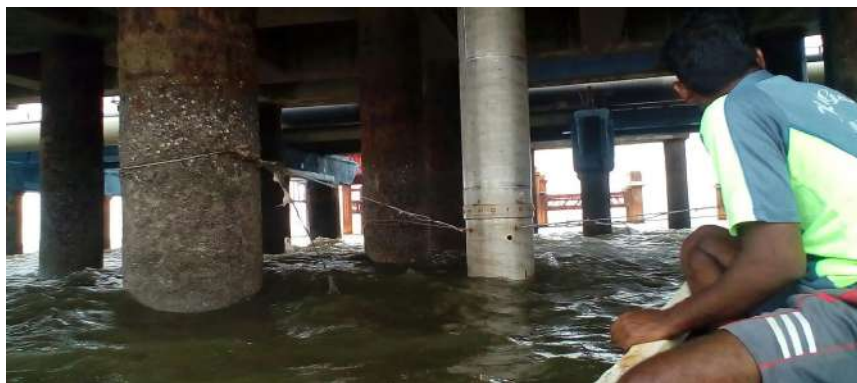
◆ Strainers, Dismantling Joints, Air Plugs for flow control

Our Strength in this area is ability to develop Standard, Non standard designs & Manufacturing this in best quality standards with fastest delivery period. Our Designs are simple, robust, easy for maintenance. Standard sizes are often kept in stock so that there is virtually no delivery period.



◆ Caisson Pipes

These pipes are casing to vertical turbine pumps typically installed inside Sea. Theses pipes are required to protect alignment of Pumps from sea waves and tides.



Pressure Vessels, Tanks, Prefabricated Pipelines - Structures

Pre-fabrication is smart fabrication!!!



One should definitely adopt this idea if he is confident about designs. You improve speed, You improve Quality, You reduce Cost! There are many sectors in industry where onsite fabrication is too difficult / expensive / risky. This includes pipelines in the Oil & Gas industry where hot works are not allowed. Structures, pipelines in commercial areas where continuous work-front is a challenge. Fire-fighting piping, sprinkler systems is a section where a lot of piping is required and we can achieve erection of piping in kilometers within just one or two days if the whole piping is prefabricated along with painting and the site team has to just hang the pipe and tighten the bolts.



Pressure Vessels, Expansion tanks, Storage Tanks



The Vessels are designed and manufactured as per IS-2825, ASME-BPVC-Sec.VII or any applicable national International Standards. We can manufacture

pressure vessels up to 100 cum in-house. Hydro-testing can be done up to 100 Kg/Sq.Cm. We offer every type of quality testing that is required. viz. Radiography, DP, UT, Physical / Chemical Proper-





Turnkey Projects, Water Audits, Distribution Networks

MANUFACTURING and CONTRACTING are two different types of businesses. One needs to carefully understand the difference in all applicable aspects for successful delivery of project to user. We have dedicated team to executes On-site works, Water Audits, Large size pumps & allied machinery installations, or any electro-mechanical turnkey projects, contracts. The Project Manager acquires enough resource like dedicated Assets, workforce, tooling, Decision making authority as well as back up of manufacturing unit which gives him enormous strength to execute the job with virtually no hurdles. Furthermore we have very good allies in fabrication field and wide network of trusted vendors in the field of water supply. This is because of our long presence in market and manufacturing base. This adds up to strength of our project manager and he makes any complicated job looks easier than ever !!



Prestigious Users of our Products, Services

- ◆ Bangalore Water Supply & Sewerage Board (BWSSB)
- ◆ Karnataka Neeravari Nigam Limited (KNNL)
- ◆ Narmada Valley Development Authority (NVDA)
- ◆ Water Recourses Department (WRD)
- ◆ Krishna Bhagya Jal Nigam Limited (KBJNL)
- ◆ Visvesvaraya Jal Nigam Limited (VJNL)
- ◆ Maharashtra Industrial Development Corporation
- ◆ Zanzibar Municipal Corporation (Tanzania)
- ◆ Adani Port Trust Hazira, Mundra, Kattupaali Etc.
- ◆ Hindustan Uniliver Ltd., Uniliver Ltd. (Sri Lanka)
- ◆ Municipal Corporations: Mumbai, Thane, Kalyan-Dombivli

- ◆ Indian Navy
- ◆ Delhi Jal Board
- ◆ JSW
- ◆ LAVASA Corporation
- ◆ Mumbai Port Trust (MBPT)
- ◆ Maharashtra Jeevan Pradhikaran (MJP)
- ◆ Vidarbha Irrigation Development Auth. (VIDC)
- ◆ V.O. Chindabaranar Port Trust (VOCPT)
- ◆ Pimpri Chinchwad Municipal Corp.(PCMC)



Our Clients

- ◆ Hindustan Construction Company
- ◆ Shapoorji Pallonji & Co Ltd
- ◆ GVPR Engg. Ltd
- ◆ Mumbai Municipal Corporation (MCGM)
- ◆ Sterling and Wilson Ltd
- ◆ JMC Projects (India) Ltd
- ◆ Jain irrigation system Ltd
- ◆ Burg Industries (UAE)
- ◆ Amrutha Construction Pvt Ltd.
- ◆ Aditya Construction Pvt Ltd.
- ◆ BPCl
- ◆ Jyoti Ltd
- ◆ Voltas Ltd
- ◆ Pratibha Industries
- ◆ ITD Cem India Ltd.
- ◆ LC Infra Projects Pvt Ltd.



Third Party Inspection / Design / Services Approvals Agencies

- ◆ Bureau Veritas
- ◆ Engineers India Ltd (EIL)
- ◆ Projects and Development India Limited (PDIL)
- ◆ Royal Hoskonings (RH)
- ◆ Dr. Amin controllers
- ◆ CQAE-WE
- ◆ TÜV
- ◆ SGS
- ◆ IRClass
- ◆ TCE
- ◆ MWH India Pvt Ltd
- ◆ QSS
- ◆ DRA



Our People

Mr. Pradeep Mandre – Our CEO & Most important asset to the company. He is serving the industry since more than 35 years with his vast experience in Pumps, Substations, Water supply - lift irrigation schemes. With the approach of continuous learning and innovation, Mr. Pradeep Mandre has developed a passion to find unique and smart solutions for our clients. Just one round on client site / field and he knows all your technical strengths & weaknesses along with production proceedings. He may come up with such an improvements / solutions which working engineer or manager can not think of.



Mr. Omkar Mandre – He is an instrumentation engineer with good collection of technical knowledge. He has some good skills over project planning, material procurement, taxation & other commercial activities of company. He has served in an organization making the Special purpose machines. The Machines were primarily using designs of Jigs & Fixtures for the speeding of production of Automobile parts. He has been involved in the design, Site erection & Commissioning of the Automation of systems. This included Programming of PLC's, HMI's SCADA etc. He has also worked with Site Activity based contracting firm. He has hands on experience in Largest Sewage Pump refurbishment for MCGM Bandra. The works included developing the Import Substitute parts for the imported Pumps. The development of Impellers for the Ghatkopar NGPS was an unique experience to be stated.

Mr. Swagat Kulkarni – Mr. Swagat is a qualified engineer with a strong hand on site erection and commissioning activities. He has some undoubted skills about handling manpower, inspiring them for quality and teamwork. He recently completed a job of erection testing commissioning of 11KVA DG set along with all its accessories. Major highlights are as follows. 1. Accurate positioning of 18 ton DG set & 10 ton transformer with very few handling equipments and limited space. 2. manufacturing and erection of 11mtr high chimney structure on site. 3. Control Panels and HT panels installation upto 11KVA. & its cabling & terminations.



INFRASTRUCTURE



Design Facility



**Manufacturing Facility 13,000 Sq.Ft Area,
80HP 3Phase Power**



DFT Check



DP Check



Hydro testing

Fabrication Area



Qualified Skilled



Painting Area



Radiography



Contact Details:

DIVYA ENTERPRISES.

Mr. Pradeep G Mandre

Cell: 982 062 4408

Email: pradeepmandre123@gmail.com

Mr. Omkar P Mandre:

Cell: 977 3465 286

Email: mandre.omkar@gmail.com

Website: www.divyaent.co.in